



Normark
LANDSCAPES

THE NORMARK DIFFERENCE



Company-wide positive can-do attitude that strives to ensure the success of every project for all stakeholders involved.



We embrace complexity, utilizing innovative solutions to tackle challenging projects with skill and expertise.



We embrace technology to enhance the quality of our work and deliver efficient, effective solutions to our clients.



We value our staff and their contributions, as demonstrated by our impressive 97% retention rate and our commitment to fostering a supportive and fulfilling workplace.



We are committed to being socially responsible and making a positive impact in the community.



Our in-house logistics department provides greater control over deliveries and enables faster response times when necessary.



OUR STORY

Normark is a second generation family-owned business that has been providing civil and landscape design, construction, and maintenance solutions in Melbourne since 1977.

Our humble beginnings have led us to become a one-stop-shop for a wide range of project needs, and we take great pride in supporting local businesses and creating job opportunities in the community.

We work closely with design teams to ensure a smooth process from conception to construction, and our garden maintenance services provide ongoing support to ensure the longevity of the project. Our commitment to customers, integrity, honesty, safety, accountability, and the community is at the heart of everything we do, and this has earned us a reputation for quality workmanship at exemplary standards, which has driven our exponential growth.

At Normark, we believe in being socially responsible, embracing complexity, and leveraging technology to enhance the quality of our work. We prioritize the well-being of our staff, as evidenced by our impressive 97% retention rate.

To maintain our high standards, we undertake fewer projects at a time to ensure that we can deliver quality projects to the highest standards. We strive to maintain our reputation for quality workmanship while remaining committed to delivering successful projects that meet the unique needs of our clients and contribute to the betterment of the community.

Our philosophy centers on
delivering a seamless client
experience.



OUR SERVICES

Normark Landscapes provides comprehensive civil and landscape services with extensive experience in a diverse range of projects. Our commitment to delivering top-quality results is unwavering, whether it's a large-scale commercial project, a smaller public project, or ongoing maintenance work.

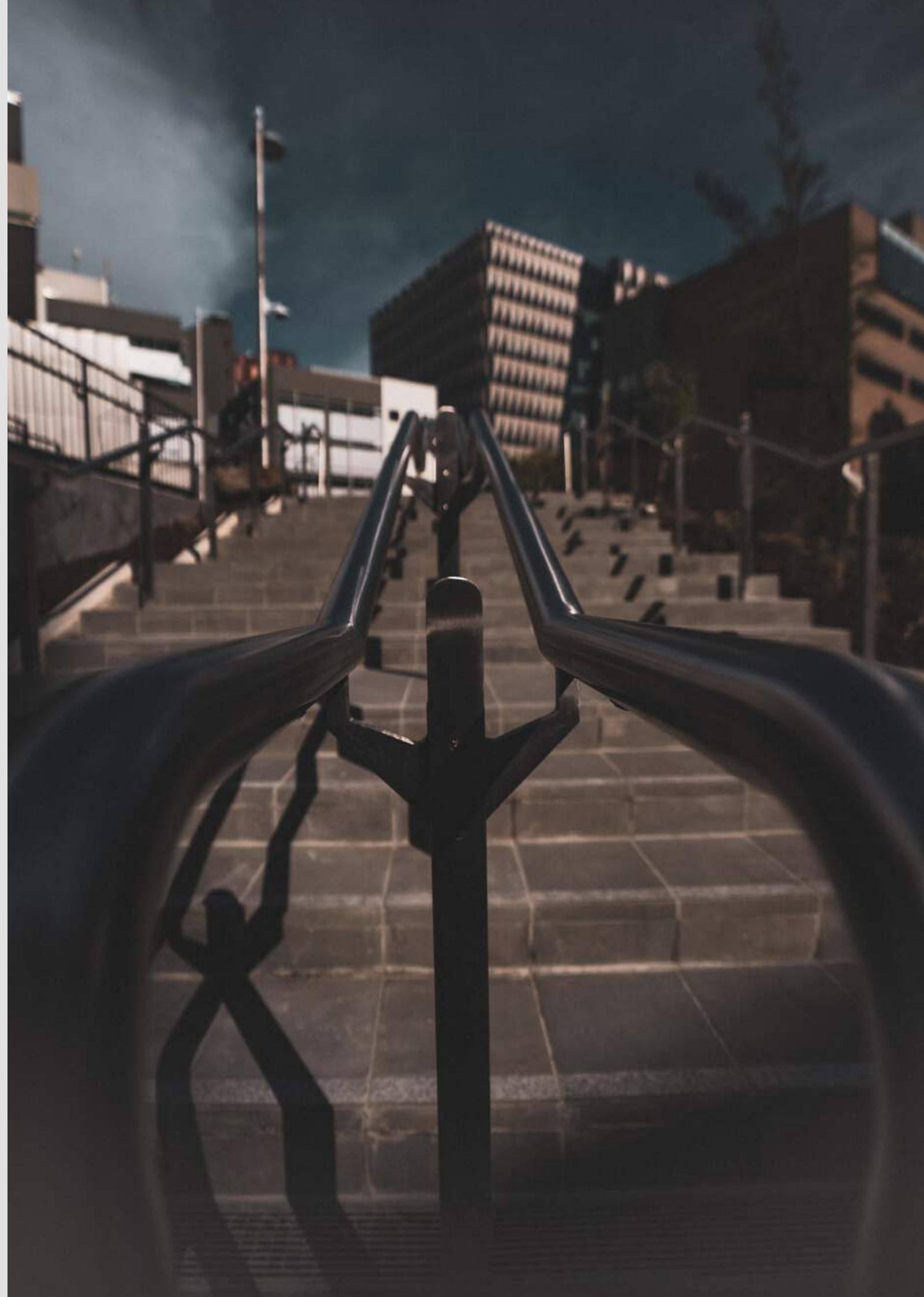
Our team has the expertise and experience to manage all aspects of a project, including stakeholder engagement, communication, planning, design, construction, and ongoing maintenance. We work closely with our clients to develop tailored solutions that meet their specific needs, using cutting-edge equipment and technologies to ensure efficiency and cost-effectiveness.

We offer a comprehensive range of services, including civil construction, concrete works, swimming pools, fencing, timber structures, drainage, soft landscaping, furniture, steelworks, road construction, walls, waterproofing, paving, and more. Our ongoing maintenance services ensure that our projects continue to look and function at their best long after the initial construction is complete.

The business is committed to maintaining the highest standards of safety, quality, and environmental compliance on all of our projects. We have a proven track record of success, and our long-standing relationships with clients are a testament to our expertise, professionalism, and commitment to excellence.

Normark Landscapes is an active member of Family Business Australia, Landscape Victoria, Victorian Building Authority, Master Builders Victoria, and RMIT Employer Choice Program, which reflects their pride in their industry and commitment to excellence.

Streamline your projects with our stress-free and solution-focused contracting services.





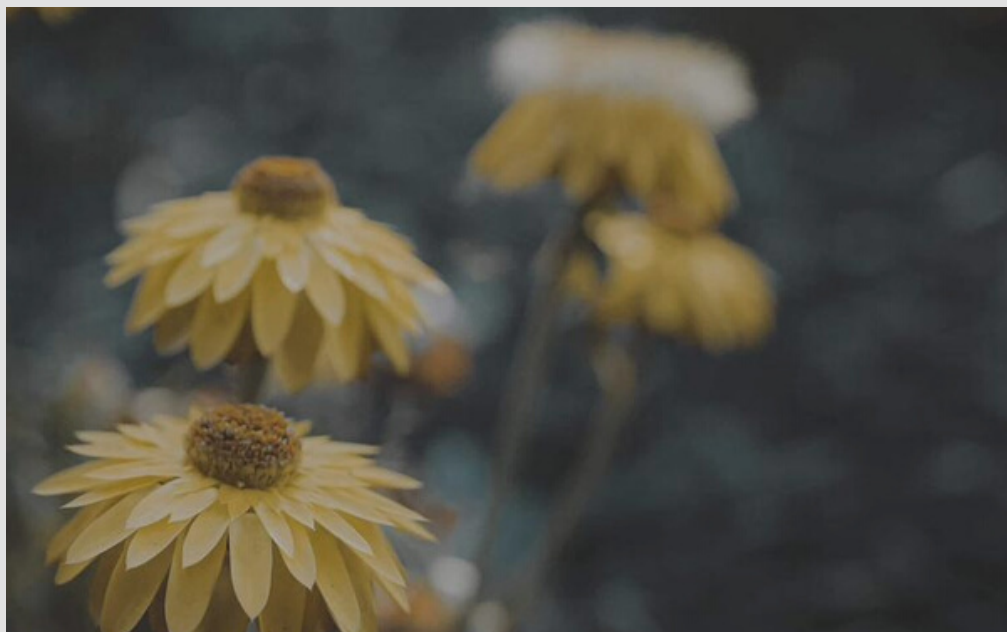
OUR COMMITMENTS

OPPORTUNITY

At our company, we value and prioritize creating a welcoming and inclusive environment where everyone has equal opportunities to thrive.

We believe that diversity is a strength and strive to ensure that all employees feel supported and valued, regardless of their background. To achieve this, we have a dedicated HR department that works to foster an environment of respect, collaboration, and growth.

We also extend this commitment to our procurement practices, partnering with vendors and suppliers who share our values of promoting equal opportunities for all. Ultimately, we believe that a workplace that prioritizes inclusion leads to happier employees and better outcomes for our clients.

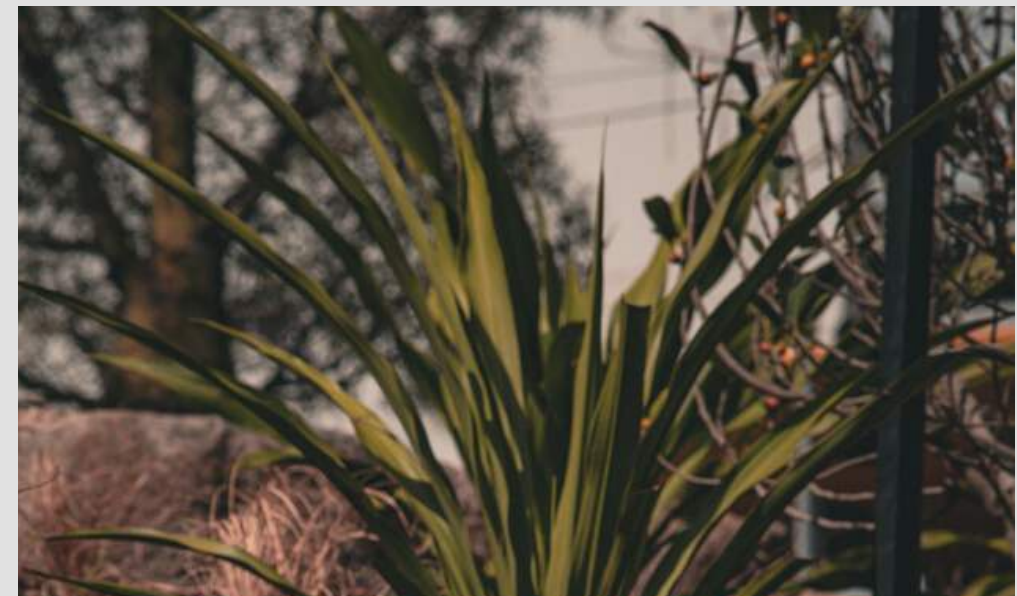


RESPONSIBLE PROCUREMENT

We take pride in our commitment to social procurement and environmental sustainability. We believe that every business has a responsibility to make a positive impact on the world, and that's why we prioritize working with vendors and suppliers who share our values of diversity, equity, and inclusion, and are committed to environmental sustainability.

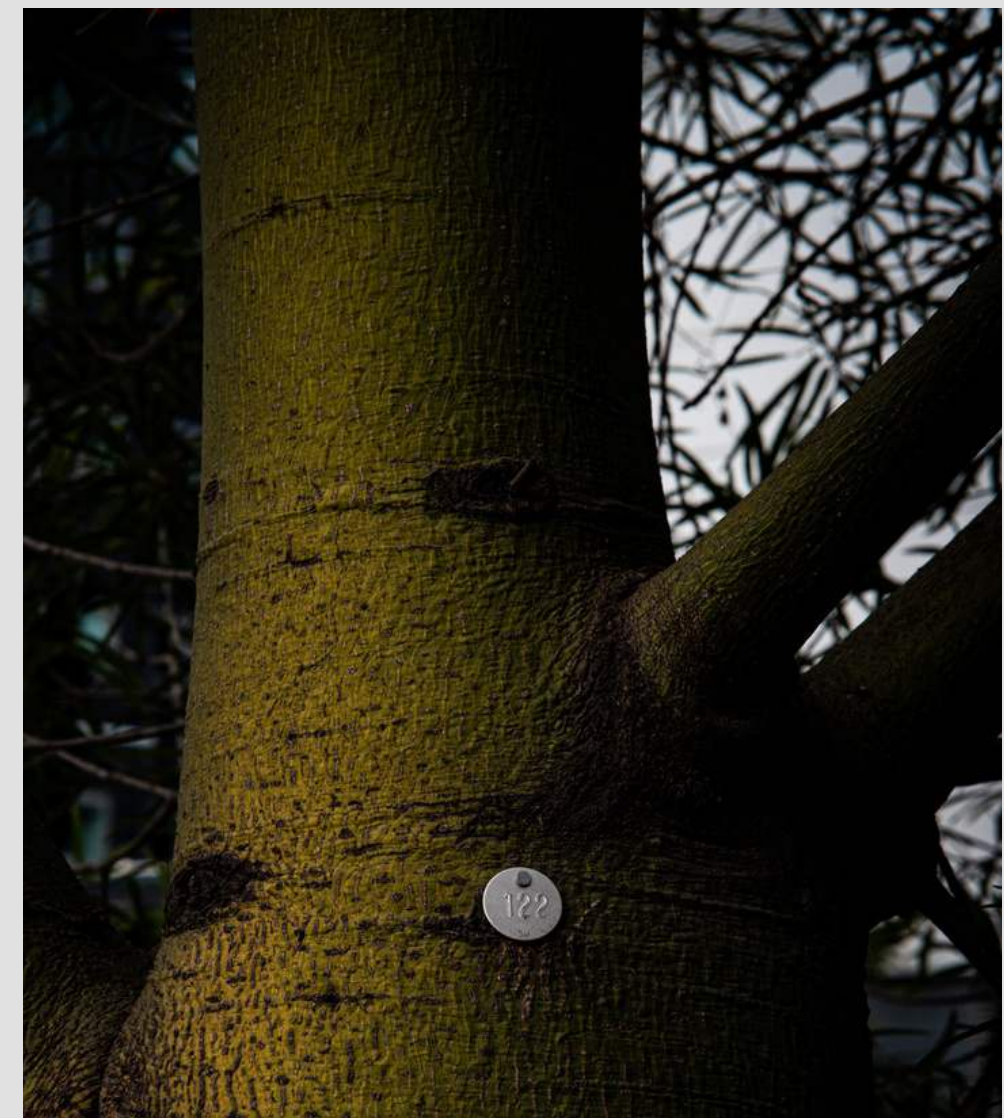
Our thorough procurement team has extensive experience in construction projects, processes, and social procurement targets, which allows us to ensure that every aspect of the procurement process is executed seamlessly, resulting in high-quality, cost-effective, and timely delivery.

Moreover, we have completed numerous projects with green star requirements, which demonstrates our expertise in delivering projects that are not only aesthetically pleasing but also environmentally sustainable. We are passionate about incorporating sustainable materials and practices into our projects, which helps us to reduce our environmental footprint and create a more sustainable future. With our commitment to social procurement and environmental sustainability, Normark Landscapes is the right choice for businesses and organizations that value positive social and environmental outcomes.



PROJECT TARGETS

Normark Landscapes is committed to achieving project targets in the areas of social procurement, financial, project-specific, and program targets. With our extensive experience in the industry, we are confident in our ability to successfully deliver on project commitments.





VALUE IN SAFETY



Normark Landscapes is fully committed to maintaining the highest standards of safety, quality, and environmental sustainability. We adhere to the Occupational Health and Safety Management standard (AS/NZS 4801) to ensure the safety of our employees, clients, and stakeholders. This involves implementing rigorous safety protocols, conducting regular safety training, and constantly monitoring and evaluating our safety practices to identify areas for improvement.

We are also dedicated to environmental management, following the guidelines outlined in the Environmental Management standard (ISO 14001). Our team takes great care to minimize our environmental impact by implementing sustainable practices throughout all stages of our projects. This includes responsible waste management, using eco-friendly materials, and reducing our carbon footprint wherever possible.

Normark Landscapes also maintains a strong commitment to quality management, which we achieve through adherence to the Quality Management standard (ISO 9001). We ensure that all of our work meets and exceeds the highest quality standards, from the initial design phase to the final stages of construction and maintenance. This involves rigorous quality control processes, regular performance evaluations, and continuous improvement efforts to deliver the best possible results for our clients while maintaining our commitment to safety and environmental sustainability.



PROCORE®

We utilize the industry-leading software, Procore, to manage quality and safety in our construction projects. With Procore, we can effectively manage and track our projects, ensuring that they meet the highest standards of quality and safety.

The software's powerful quality management tools enable us to easily create and manage quality control processes, such as inspection, checklists, and ITP's, which helps us to identify and rectify any issues that may arise during the project lifecycle.

Additionally, Procore's safety management features help us to maintain a safe work environment for our team and everyone involved in the project. We can easily create and manage safety plans, conduct safety inspections, and identify potential hazards, all of which help to minimize the risk of accidents and injuries on our job sites.

With Procore, we can ensure that our projects are completed to the highest standards of quality and safety, giving our clients peace of mind and confidence in our work.

Safety is not just a priority - it is a core value that underpins everything we do.

PROJECTS



UNIVERSITY OF MELBOURNE

KANE CONSTRUCTIONS | VALUE: \$7.10M

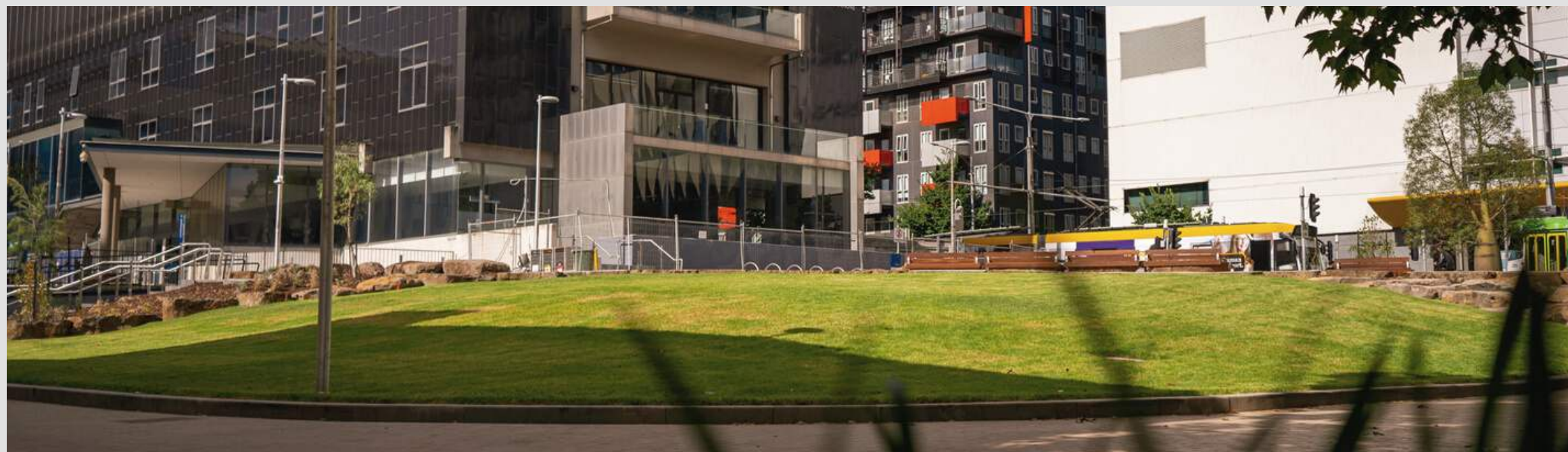
The University of Melbourne's Student Precinct project, which was awarded to a Kane for \$160 million in December 2019, has been successfully completed. The project was delivered in nine separable portions, including the demolition of Alice Hoy and refurbishment of ERC Library, Doug McDonnell Building, Frank Tate Building, and 1888 Building. There were also new builds for the Arts and Cultural Building and the Student Pavilion Building, as well as refurbishment for the Landscaping/Amphitheatre North and the Amphitheatre South.

The Student Precinct has significantly contributed to the transformation of the on-campus student experience at Parkville, delivering a world-class student hub for the whole campus community. The project comprised six buildings and delivered 37,050m² of new or refurbished internal and external building and landscape space. Despite the site's complexity and constraints, the project was completed successfully, and traffic across the precinct was made easier through the project's design.



Normark Landscapes scope:

- Earthworks
- Waterproofing
- Unit paving
- Paving cladding
- Asphalt
- Kerbs & edges
- Amphitheater
- Rooftop gardens
- Custom furniture
- Concrete pavements & stairs
- Retaining walls
- Robot planters
- Rock work
- Timber decking
- Trellis
- Plants
- Garden beds & planters
- Blow in works
- Instant turf
- Synthetic turf
- Irrigation
- Edging, bike racks, tactiles and more.



HAWTHORN PARK

HICKORY CONSTRUCTIONS | VALUE: \$1.51M

Hickory Constructions was awarded project to develop a property on an approximate 12,600 square meter land area, featuring 345 residential units consisting of apartments, townhouses, and retail spaces. The buildings range from 3 to 6 levels and are situated above a 2-level basement car park. The property includes a central garden courtyard, a rooftop lounge with a skybridge swimming pool, and landscaped public piazzas at the Burwood and Camberwell Road entries.

The one, two and three bedroom residences enjoy grand garden vistas designed by landscape architect Jack Merlo.



Normark Landscapes scope:

- Minor demo
- Unit paving
- Civil works (asphalt, kerbs, paths, etc)
- Drainage
- Large courtyard works
- Timber decking
- Timber cladding
- Pool deck, walls & coping
- Rooftop gardens
- Rooftop fire pits
- Custom steel edges for planters
- Custom furniture
- Custom planters
- Concrete pavements & stairs
- Plants
- Garden beds & planter fill
- Blow in works
- Irrigation and more.

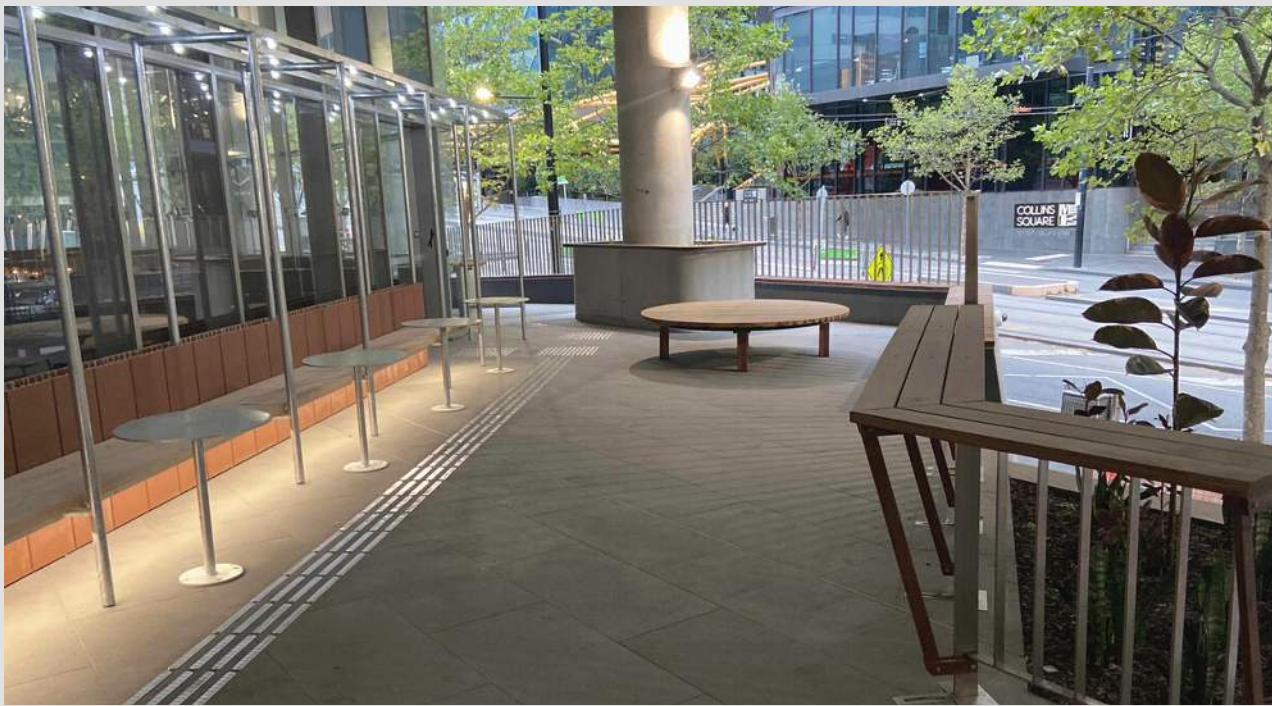


750 COLLINS STREET

MULTIPLEX | VALUE: \$2.33M

Multiplex was awarded the project to transform Monash College's existing 10-storey office building into a contemporary educational facility for students in Victoria. The revamped Monash University campus now features modern and collaborative workspaces, specialized science rooms, art and design rooms, a 400-seat auditorium, a wellness center, and a student hub with numerous breakout spaces located throughout the premises.

To achieve this, Multiplex undertook structural modifications to the atrium, resulting in ten new escalators arranged in a criss-cross pattern to connect all floors. This endeavor marks the fifth project completed by Multiplex for Monash in recent years, which has resulted in a progressive campus that is student-focused and designed with innovation in mind.



Normark Landscapes scope:

- Minor demo
- Waterproofing
- Unit paving (internal & external)
- Paver cladding
- Winter garden construction
- Custom tree grates / steel edges
- Custom furniture
- Custom planters
- Concrete pavements & stairs
- Retaining walls
- Plants
- Garden beds & planter fill
- Blow in works
- Steel edge
- Irrigation, misting and more.

VSBA SCHOOLS

KANE CONSTRUCTIONS | VALUE: \$4.20M

Kane Constructions secured the Design & Construct contract to deliver the New Schools 2023 - Bundle B project for the Victorian School Building Authority (VSBA). The project involves the construction of four primary schools, one secondary school, and two early learning centres situated in the expanding areas of metropolitan Melbourne.

The schools included in the project are Camms Road Primary School & Early Learning Centre, Wollert West Primary School & Early Learning Centre, Officer Rix Road Primary School, Hayes Hill Primary School, and Merrifield West Secondary School. Each school offers a range of amenities, such as administration buildings, staff offices and amenities, general purpose classrooms, community hubs, gymnasiums, music and performing arts spaces, science buildings, food technology spaces, sports fields, hard courts and outdoor play areas.

Normark Landscapes was awarded the civil/landscape packages for Hayes Hill and Merrifield. The project is expected to be completed in time for the 2023 school year.

Normark Landscapes scope:

- Excavation
- Unit paving
- Drainage
- Playground works
- Timber & steel edges
- Rooftop gardens
- Rooftop fire pits
- Custom steel edges for planters
- Custom furniture
- Synthetic turf
- Instant turf
- Concrete pavements & stairs
- Plants
- Garden beds & planter fill
- Blow in works
- Irrigation and more.



COMMERCIAL CONTACTS

JAMES ANDERSON
MANAGING DIRECTOR

M: 0401 951 297
E: james@normark.com.au

MICHAEL ROBINSON
PRE-CONSTRUCTION MANAGER

M: 0450 606 265
E: michael@normark.com.au

MAFAS SIDDIK
SENIOR ESTIMATOR

M: 0450 488 948
E: mafas@normark.com.au

JAMIE SMITH
PROJECT MANAGER

M: 0430 165 331
E: js@normark.com.au

BRAD OCKWELL
PROJECT MANAGER

M: 0426 276 957
E: brad@normark.com.au

ROHIT KUMAR
PROJECT COORDINATOR

M: 0470 442 337
E: rohit@normark.com.au

NICK GOWLAND
PROJECT COORDINATOR

M: 0439 987 063
E: nick@normark.com.au

GEORGINA POLE
WHS & HR MANAGER

M: 0417 138 521
E: georgina@normark.com.au

KENAN HURIC
SYSTEMS MANAGER

M: 0450 566 114
E: ken@normark.com.au

