

Normmark

LANDSCAPES





THE NORMARK DIFFERENCE

- We foster a company-wide positive, can-do attitude, committing to the success of every project for all stakeholders.
- We commit to being socially responsible, making a positive impact in the community.
- We embrace project complexities, utilizing innovative solutions to tackle challenges with skill and expertise.
- We leverage technology to enhance the quality of our work, delivering efficient and effective solutions to our clients.
- Our impressive 97% staff retention rate reflects our commitment to valuing and supporting our team.
- We maintain an in-house logistics department, providing greater control over deliveries and enabling faster response times when necessary.



LOLLYPOP CREEK

OUR STORY

Normark, founded in 1977, has grown from a small family-owned landscaping venture into a premier name in landscaping construction throughout Victoria. With a large, skilled workforce, we've dedicated decades to transforming spaces with our unmatched landscaping and construction expertise.

Our evolution from a modest family operation to a distinguished company underscores our unwavering commitment to excellence and our ability to enhance our services while maintaining the highest standards.

In every project, in Victoria and beyond, we apply our comprehensive experience to exceed client expectations, proving that our development is founded on consistent quality, reliability, and the exceptional skills of our team. This growth not only showcases our dedication to crafting stunning landscapes but also highlights our family values and our significant contributions to the communities we serve.

Our philosophy centers on delivering a seamless client experience.





OUR SERVICES

Normark delivers expert civil and landscape services, focusing on tailored project management to custom maintenance. Our experienced team manages every aspect, from planning and construction to stakeholder engagement, employing advanced technology for efficient, client-centered solutions.

Landscape Services

We excel in both hard and soft landscaping, from creating beautiful garden designs to installing pavements and custom features, enhancing spaces for enduring enjoyment.

Civil Services

Our civil services cover a wide spectrum, including but not limited to site preparation, grading, car park, road and retaining wall construction, pathways, and drainage systems, designed to be adaptable for any project requirement, ensuring success across the board.

Maintenance Services

We maintain landscape vibrancy with comprehensive services, from garden care to sophisticated irrigation management, ensuring year-round quality.

Proudly associated with leading industry bodies, including Family Business Australia, Master Builders Victoria and Landscape Victoria, Normark's commitment to excellence shines in every project.



HAWTHORN PARK



OUR COMMITMENTS

Opportunity

We foster an inclusive workplace, emphasizing diversity and equal opportunity for all. Our HR department ensures a collaborative, respectful environment, enhancing our team's satisfaction and client outcomes.

Responsible Procurement

Dedicated to social and environmental sustainability, we prioritize partnerships with like-minded vendors, ensuring our projects not only meet but exceed green standards.

Project Targets

Our extensive industry experience positions us to strive for the achievement of project targets, with a strong emphasis on meeting social procurement and program objectives.



LEADING IN SAFETY, QUALITY, AND ENVIRONMENT

Quality Assurance

Our commitment to quality sets us apart. Guided by ISO standards, every project reflects our drive for excellence, ensuring efficiency and client satisfaction.

Safety Commitment

Safety is our top priority. Following ISO standards, we strive to ensure a secure environment for all, establishing high safety benchmarks in all our endeavors.

Environmental Responsibility

We're dedicated to environmental responsibility. Our practices, aligned with sustainability goals, aim to reduce our impact and lead the way in eco-friendly innovation.

Across all areas, we utilize the latest software like Procore to manage and uphold our ISO-certified standards, ensuring the highest level of precision and accountability in every project.



MERRIFIELD SECONDARY COLLEGE

PROJECTS

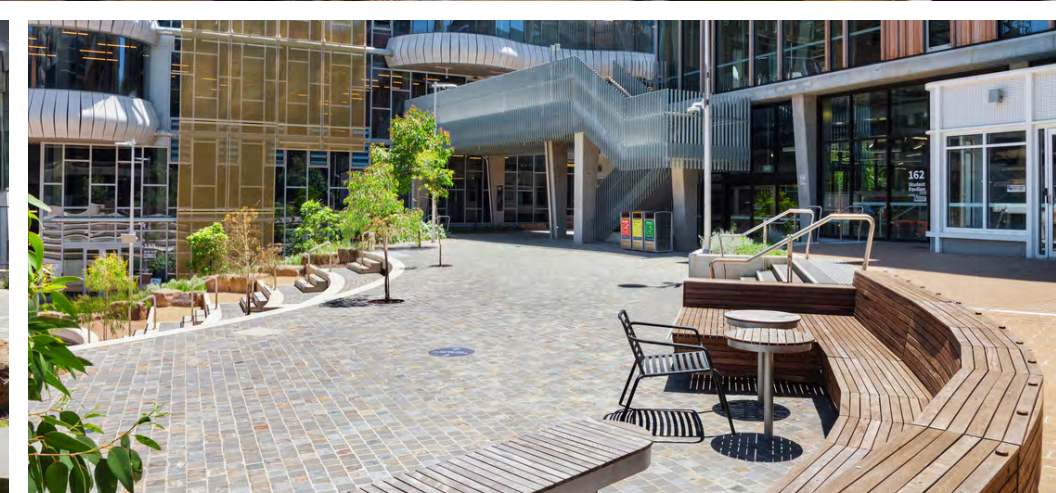


UNIVERSITY OF MELBOURNE

KANE CONSTRUCTIONS | VALUE: \$7.10M

The scope of our works encompassed a diverse range of tasks, including earthworks, waterproofing, and the installation of unit paving and paving cladding. We applied asphalt, constructed kerbs and edges, and built an amphitheater alongside rooftop gardens.

Custom furniture was designed and placed, alongside concrete pavements and stairs, retaining walls, and innovative robot planters. Our team also undertook rock work, timber decking, and trellis installation. We planted a variety of plants, created garden beds and planters, and performed blow-in works. The project featured instant and synthetic turf, comprehensive irrigation systems, and added finishing touches like edging, bike racks, and tactiles, among other services.

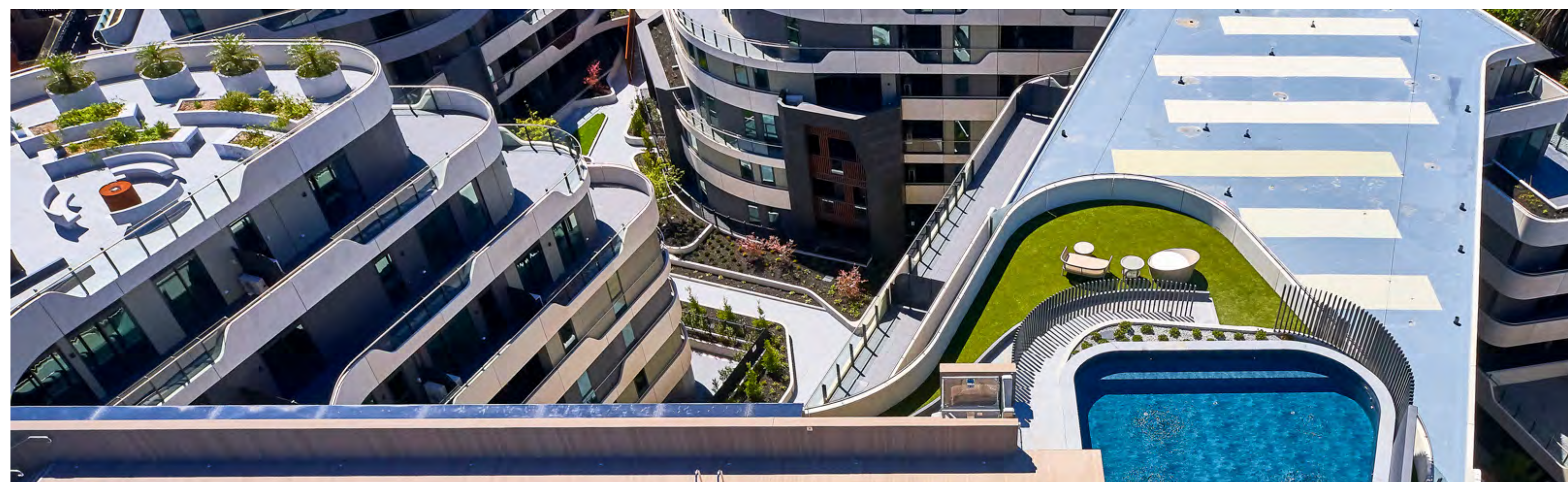
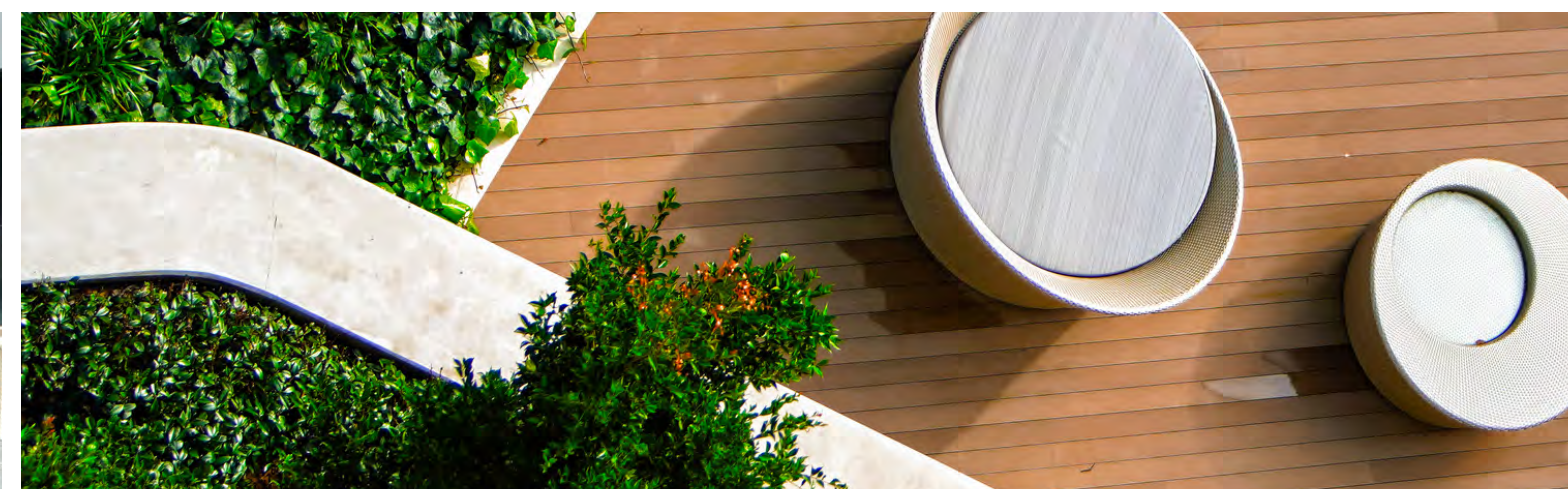


HAWTHORN PARK

HICKORY CONSTRUCTIONS | VALUE: \$1.51M

Normark was responsible for a comprehensive array of tasks, beginning with minor demolition work and extending to unit paving and various civil works, including asphalt laying, kerb setting, and path construction.

Our team managed drainage systems, undertook large courtyard projects, and installed timber decking and cladding. We also designed and constructed pool decks, walls, and coping, in addition to creating rooftop gardens complete with fire pits. Custom elements were a significant aspect of our scope, encompassing steel edges for planters, bespoke furniture, and personalized planters. The project included laying concrete pavements and stairs, planting an assortment of plants, establishing garden beds and planter fill, performing blow-in works, and installing comprehensive irrigation systems, among other services.



PERCY TREYVAUD MEMORIAL PARK

ADCO | VALUE: \$3.5M

In this project, Normark tackled a diverse set of tasks including earthworks, unit paving, and extensive civil works that covered asphalt carpark construction, kerbs, paths, and effective drainage systems.

We also crafted engaging outdoor areas with timber decking, walls, and rooftop gardens, complete with custom elements like steel edges for planters, bespoke furniture, and planters. Additionally, our work included concrete pavements, stairs, and comprehensive irrigation systems, all enhanced by the strategic placement of plants, garden beds, synthetic turf and the use of acrylic.



LOLLYPOP CREEK

ADCO | VALUE: \$9.33M

For this project, Normark delivered an array of services including the construction of walls, pavements, and timber decking, alongside comprehensive carpark and drainage development.

Our work also featured the installation of kerbs, various structures, and synthetic turf, complemented by both concrete and timber seating areas. A fully integrated irrigation system was put in place to support the extensive soft landscaping efforts. This project showcased our versatility in handling everything from hard landscaping elements like concrete work to the aesthetic appeal of soft landscaping, and more.



