

Normark

LANDSCAPES





OUR STORY

Founded in 1977, Normark has grown from a small family-owned business into a leading name in landscaping construction across Victoria. With decades of experience, we have built a reputation for delivering high-quality, award-winning projects, including recognition for excellence in commercial landscape construction.

Our journey from a modest family operation to an industry leader reflects our commitment to quality, reliability, and innovation. We continuously enhance our services while upholding the highest standards, ensuring every project exceeds client expectations.

Across Victoria and beyond, our skilled team brings expertise and dedication to every landscape we create. Our success is built on strong family values, a commitment to excellence, and a lasting contribution to the communities we serve.

Our philosophy centers on delivering a seamless client experience.



THE NORMARK DIFFERENCE

- We foster a company-wide positive, can-do attitude, committing to the success of every project for all stakeholders.
- We commit to being socially responsible, making a positive impact in the community.
- We embrace project complexities, utilizing innovative solutions to tackle challenges with skill and expertise.
- We leverage technology to enhance the quality of our work, delivering efficient and effective solutions to our clients.
- On average, 95% of our staff choose to stay with us, reflecting the strength of our culture, commitment to well-being, and investment in professional growth.
- We maintain an in-house logistics department, providing greater control over deliveries and enabling faster response times when necessary.





OUR COMMITMENTS

Opportunity

We foster an inclusive workplace that prioritises diversity and equal opportunity, ensuring a collaborative and respectful environment. This commitment underpins our ability to deliver high-performing teams and exceptional project outcomes.

Responsible Procurement

Normark is committed to sustainability, partnering with like-minded vendors to deliver projects that exceed environmental standards. We actively support social procurement initiatives, including commissioning Aboriginal works and collaborating with diverse suppliers to drive meaningful contributions.

Project Targets

With extensive industry experience, Normark consistently achieves project targets while delivering sustainable, community-focused outcomes. We integrate innovative solutions, prioritise employment opportunities, and ensure our projects provide lasting value to stakeholders.



OUR SERVICES

Normark delivers expert civil and landscape services, focusing on tailored project management to custom maintenance. Our experienced team manages every aspect, from planning and construction to stakeholder engagement, employing advanced technology for efficient, client-centered solutions.

Landscape Services

We excel in both hard and soft landscaping, from creating beautiful garden designs to installing pavements and custom features, enhancing spaces for enduring enjoyment.

Civil Services

Our civil services cover a wide spectrum, including but not limited to site preparation, grading, car park, road and retaining wall construction, pathways, and drainage systems, designed to be adaptable for any project requirement, ensuring success across the board.

Maintenance Services

We maintain landscape vibrancy with comprehensive services, from garden care to sophisticated irrigation management, ensuring year-round quality.

Proudly associated with leading industry bodies, including Family Business Australia, Master Builders Victoria and Landscape Victoria, Normark's commitment to excellence shines in every project.





LEADING IN SAFETY, QUALITY, AND ENVIRONMENT

Quality Assurance

Normark has held ISO certification for over five years, reflecting our commitment to delivering high-quality outcomes with efficiency and client satisfaction at the forefront.

Safety Commitment

Safety is our top priority. Following ISO standards, we strive to ensure a secure environment for all, establishing high safety benchmarks in all our endeavors.

Environmental Responsibility

We are dedicated to reducing our impact and adopting sustainable practices that drive eco-friendly innovation.

Our use of advanced software like Procore supports precision and accountability, ensuring quality and consistency in every project.



UNIVERSITY OF MELBOURNE

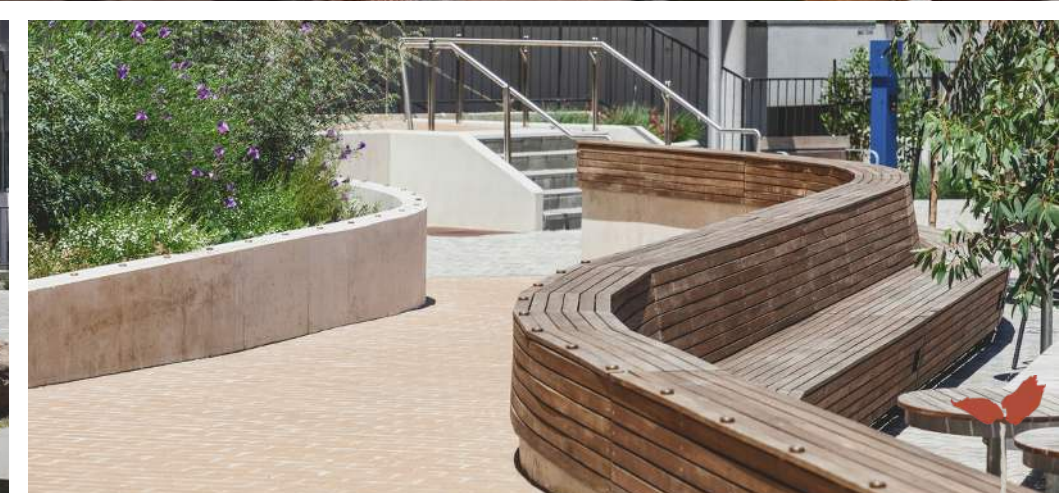
2021 | \$7.1M



Normark's award-winning efforts encompassed earthworks, waterproofing, and the installation of unit paving, cladding, and kerbs, as well as the construction of an amphitheater and rooftop gardens.

We installed custom furniture, concrete pavements, stairs, retaining walls, robot planters, timber decking, trellises, garden beds, and planters.

The project also featured rock work, blow-in planting, turf, irrigation systems, edging, bike racks, and tactiles, delivering a comprehensive landscaping solution.



WHITTEN OVAL

2023 | \$4.7M

For the Whitten Oval Stage 2 Redevelopment, Normark completed earthworks, waterproofing, and installed grey concrete paving, stabilised gravel, and wet pour rubber surfacing.

Key features were retaining walls, timber seating, bike hoops, drinking fountains, flagpoles, a playground with play equipment, timber works, mulch, planting, mulching, instant turf, and garden beds.

The works also included irrigation systems, tactile indicators, concrete edging, steps, and a rock scramble area, seamlessly blending hard and soft landscaping.



LOLLYPOP CREEK

2024 | \$9.33M



At Lollypop Creek, Normark constructed walls, pavements, timber decking, and developed carparks and drainage systems to meet the project's unique requirements.

Our work also featured the installation of kerbs, various structures, and synthetic turf, complemented by both concrete and timber seating areas. A fully integrated irrigation system was put in place to support the extensive soft landscaping efforts. This project showcased our versatility in handling everything from hard landscaping elements like concrete work to the aesthetic appeal of soft landscaping, and more.



PERCY TREYVAUD MEMORIAL PARK

2023 | \$3.5M

Normark delivered comprehensive site solutions, including earthworks, unit paving, asphalt carparks, kerbs, paths, and integrated drainage systems.

We created outdoor spaces with timber decking, walls, rooftop gardens, custom steel edges, furniture, and planters. The project also featured concrete pavements, stairs, irrigation systems, planting, garden beds, synthetic turf, and acrylic finishes.



NORTHCOTE AQUATIC

2023 | \$2.0M

Normark delivered earthworks, drainage, pavements, synthetic grass, rubber surfacing, concrete pavements, concrete edging, and pool coping. Key features included seating, bike repair stations, planting, mulching, irrigation, and a water feature area.

Play areas featured timber balance elements and equipment, creating a functional and sustainable space.

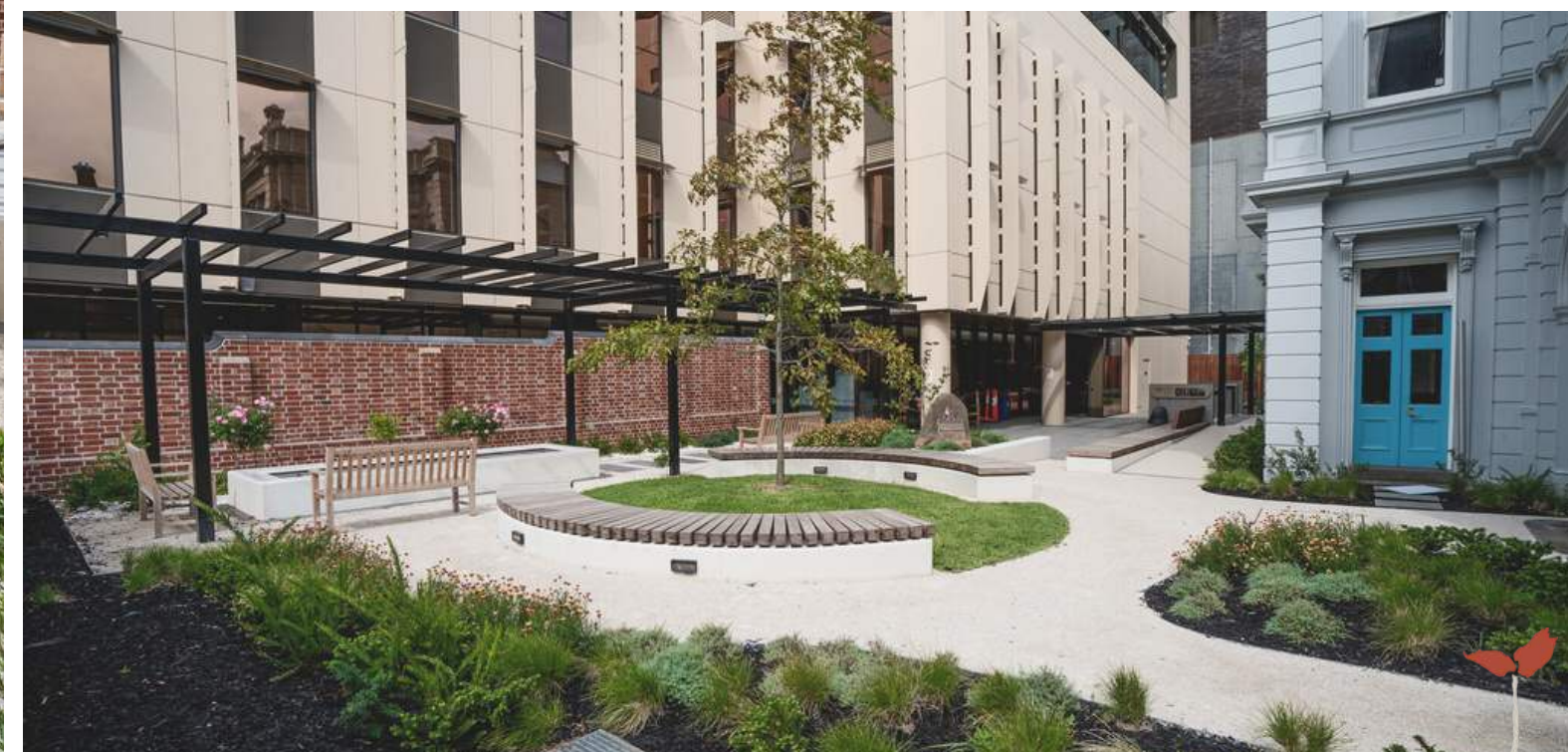
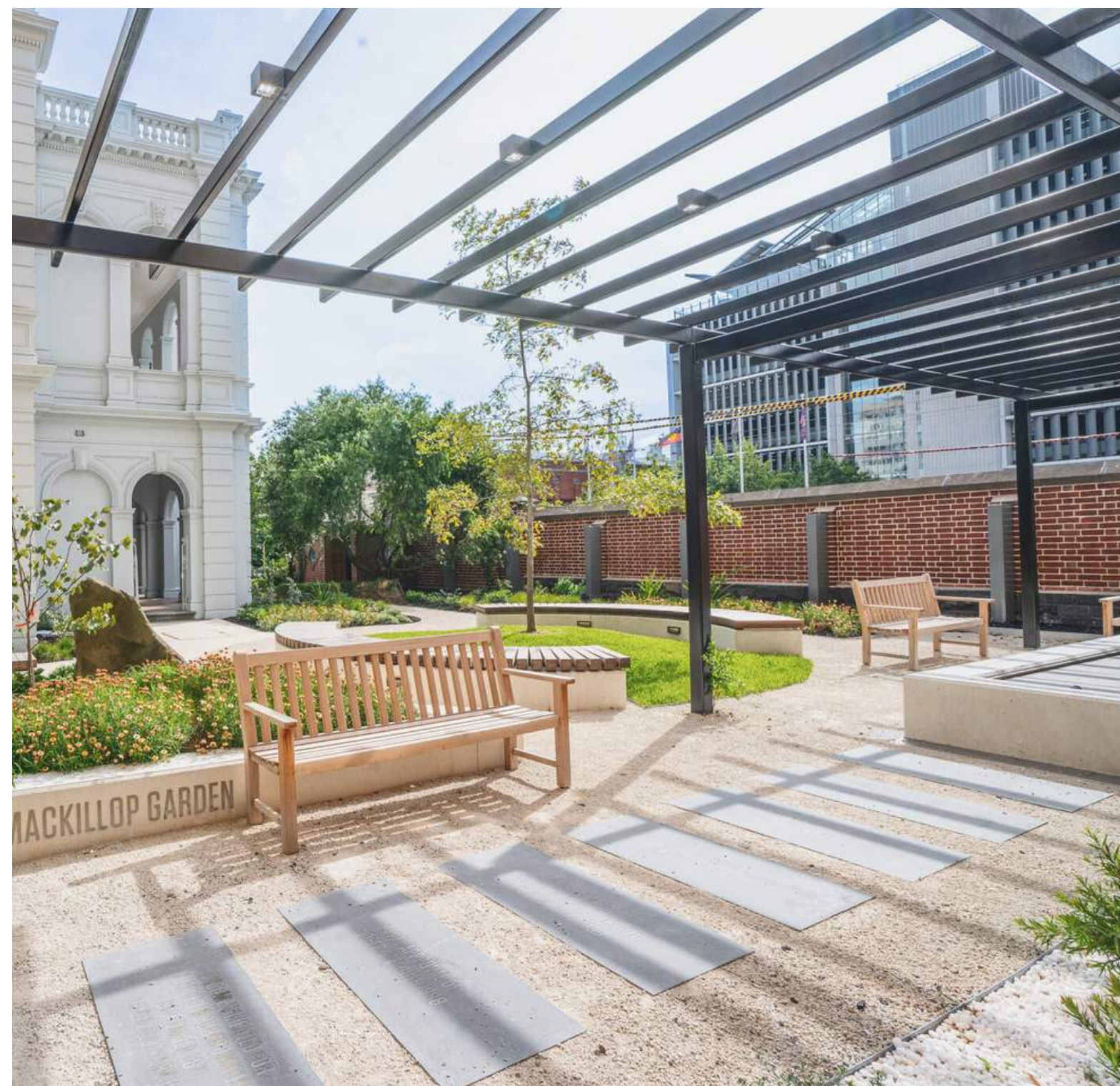


ST-VINCENTS PRIVATE HOSPITAL

2025 | \$1.0M

Normark completed extensive landscaping and civil works at St Vincent's Private Hospital, including bluestone pavements, concrete planters, external stairs, and waterproofing. The project featured courtyard works, kerbs, garden beds, timber screening, and irrigation.

Additional tasks included excavation, subsoil drainage, asphalt resurfacing, and various site finishes, ensuring seamless integration of hard and soft landscaping elements.



COMMERCIAL CONTACTS

JAMES ANDERSON
MANAGING DIRECTOR

M: 0401 951 297
E: james@normark.com.au

MICHAEL ROBINSON
PRE-CONSTRUCTION MANAGER

M: 0450 606 265
E: michael@normark.com.au

MAFAS SIDDIK
SENIOR ESTIMATOR

M: 0450 488 948
E: mafas@normark.com.au

JAMIE SMITH
PROJECT MANAGER

M: 0430 165 331
E: js@normark.com.au

BRAD OCKWELL
PROJECT MANAGER

M: 0426 276 957
E: brad@normark.com.au

ROHIT KUMAR
PROJECT COORDINATOR

M: 0470 442 337
E: rohit@normark.com.au

NICK GOWLAND
PROJECT COORDINATOR

M: 0439 987 063
E: nick@normark.com.au

GEORGINA POLE
WHS & HR MANAGER

M: 0417 138 521
E: georgina@normark.com.au

KENAN HURIC
SYSTEMS MANAGER

M: 0450 566 114
E: ken@normark.com.au

